

DURAPLANK

COMMERCIAL QUALITY PLANK



www.kenbrock.com.au

DURAPLANK

RESIDENTIAL

This range has been designed with durability, functionality and elegance in mind.

Duraplank with its heavy duty wear layer provides excellent durability, combined with a PUR surface coating which provides protection against scuffs and scratches. Duraplank can withstand all the comings and goings of a busy household backed by its lifetime residential warranty.

With a wide colour selection from the warm tones of native Australian timbers such as Western Spotted Gum, to the cool hues of Bleached Oak. There is sure to be a colour to suit all decors.



DP1301 BLEACHED OAK



DP1304 LIMED SILVER BIRCH



DP1307 GHOST GUM



DP1310 PITCH CYPRESS



DP1315 TAUPE OAK



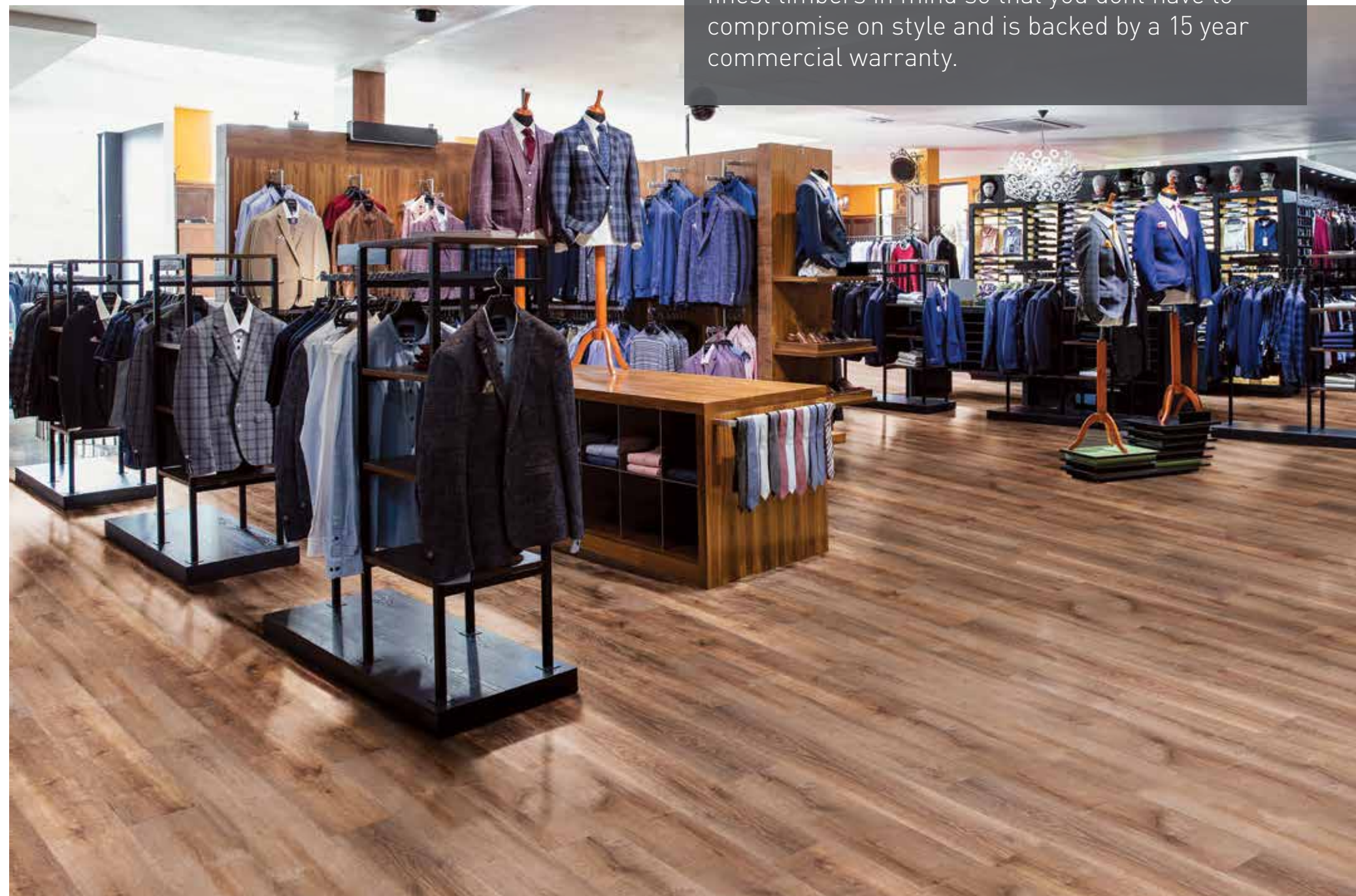
DP1312 ROYAL OAK



DP1318 OUTBACK STATION



DP1320 AUBOUR



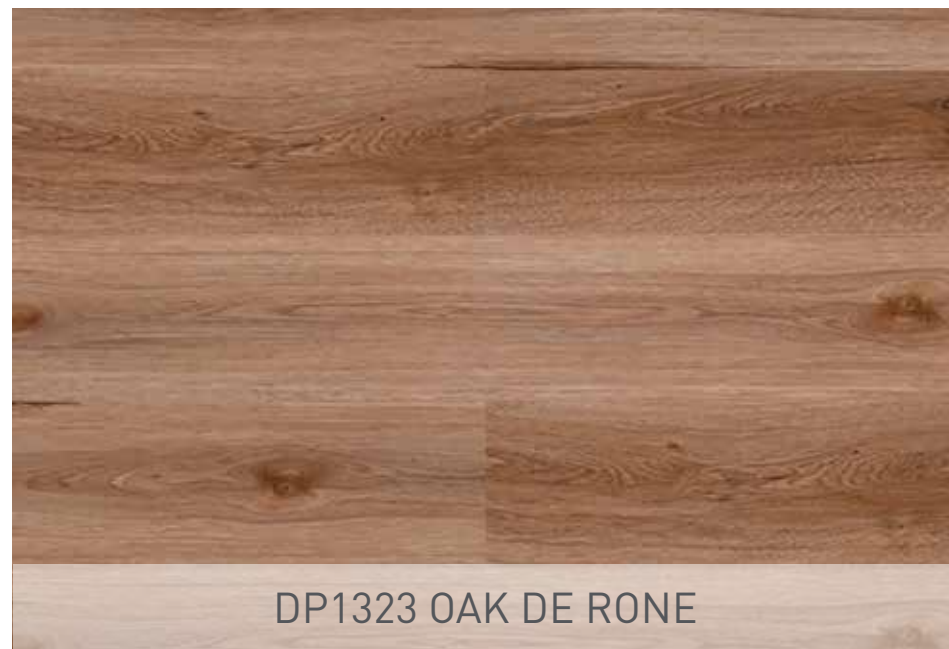
DURAPLANK

COMMERCIAL

This range not only performs with excellence in the home but also in commercial settings.

As the name suggests, Duraplank has superior durability with its 0.50mm commercial wear layer and PUR surface protection layer. Duraplank can withstand heavy commercial foot traffic and has undergone CSIRO slip testing receiving a P4/R10 slip rating.

The colour palette was designed with the finest timbers in mind so that you don't have to compromise on style and is backed by a 15 year commercial warranty.



DP1323 OAK DE RONE



DP1324 RAINFOREST SPOTTED GUM



DP1325 CELLER WOOD



DP1326 WESTERN SPOTTED GUM

MAINTENANCE AND CARE GUIDE

All floors require some type of regular care to maintain their beauty. Duraplank flooring is easy to care for and will deliver many years of satisfaction by following these simple maintenance suggestions.

INITIAL CLEANING AFTER INSTALATION

- Thoroughly sweep or vacuum to remove any surface dust and/or dirt.
- Wash the floor with cool lukewarm water using Kenbrock Maintain diluted in accordance with the instructions.

REGULAR MAINTENANCE

Regular maintenance not only keeps the floor clean, but can also reduce the frequency of more extensive maintenance.

DAILY

- Sweep, mop or vacuum to remove dust and other loose particles.
- Spot clean any marks with Kenbrock Maintain in accordance with the instructions.

WEEKLY

- Sweep, mop or vacuum to remove dust and other loose particles.
- Wash the floor with cool to lukewarm water using Kenbrock Maintain diluted in accordance with the instructions.

RESTORATIVE MAINTENANCE

If the floor surface becomes dulled you can refurbish the surface appearance by applying a floor sealer as follows:

- Strip the floor using Kenbrock Remove mixed with clean warm water and applied in accordance with the instructions and allow to dry completely.
- When the floor is completely dry apply a thin layer and even coat of undiluted Kenbrock Rejuvenate across the floor using an applicator or quality cotton mop with ring and bucket. Please ensure mop is slightly damp to prevent sealer soaking into the mop. Kenbrock Rejuvenate is available in either satin or gloss finish.
- Allow to dry then apply a second coat at right angles to the first coat and allow to dry.
- Wait 24 hours for the finish to harden then dry buff.

GENERAL

- Never slide furniture or fittings over an unprotected floor and ensure flooring protectors are used under the feet of furniture and appliances.

- Keep the floor surface clear of dirt, grit, sand and other abrasive materials, which can be walked into your home, by the use of appropriate entrance matting.
- DO NOT use rubber backed mats as they can stain your new floor.
- All spillages should be removed immediately
- DO NOT use general household cleaners on your floor unless they are specifically for vinyl floors. Kenbrock recommends the use of Kenbrock Maintain as part of your regular floor maintenance. Use of other products may invalidate your warranty.
- DO NOT use washing up liquid or any cleaning agent that contains bleach.
- DO NOT use any kind of steam or heat mop on your Duraplank flooring.

TIPS FOR KEEPING YOUR PLANKS FROM FADING

The intensity of UV light (sunlight) is what generally causes the most fading over time

- Window coverings should be used to protect your floor from direct sunlight. If it is not practical use window tints or film which block harmful UV rays while still letting light through.
- Never use anything containing a bleaching agent as it will not only fade the planks, but could also damage the surface.
- As a fail safe purchase extra plank so you can easily replace damaged or faded planks from the same batch.

TROUBLE SHOOTING

SCUFF MARKS

These are caused by friction from foot traffic across the surface of the floor. Light scuff marks can be removed by spot cleaning with Kenbrock Maintain diluted in accordance with the instructions. Heavier scuff marks may require restorative maintenance as per the above instructions.

SCRATCHING

Caused by excessive grit, dirt or other abrasive particles on the floor. Minor scratching may require restorative maintenance as per the above instructions. Any deep scratching or gouges in the planks will result in the individual plank/s needing to be replaced.

PRODUCT SPECIFICATIONS

USAGE - Heavy Domestic/Commercial



THICKNESS - 2.5mm

WEAR LAYER - 0.5mm

PLANK SIZE - 183mm x 1219mm

QTY PER CTN - 18 planks

M² PER CTN - 4.01m²



WARRANTY

Lifetime Residential
15 Year Commercial



Product colours are depicted within the limitations of the printing process. Actual product should be viewed prior to final selection.



Kenbrock

Head Office

22-24 Edison Road
Dandenong Sth, VIC 3175
Ph - 03 9765 2222

QLD Office

2 Kingsbury Street
Brendale, QLD 4500
Ph - 07 3881 1000

WA & NT - 1800 674 145

TAS & SA - 1800 674 145

NSW - 1300 785 000

www.kenbrock.com.au